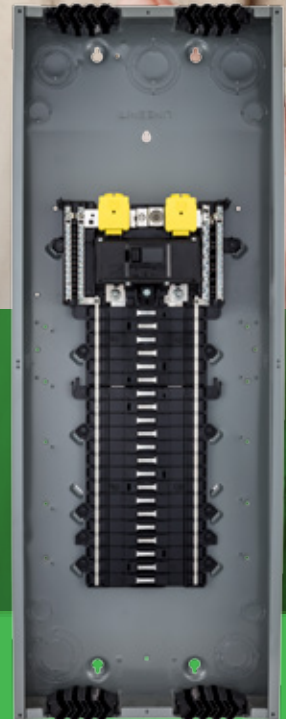




Save time and simplify your work

Plug-on Neutral Load Centers with Qwik-Grip Wire Management System



schneider-electric.us/qg

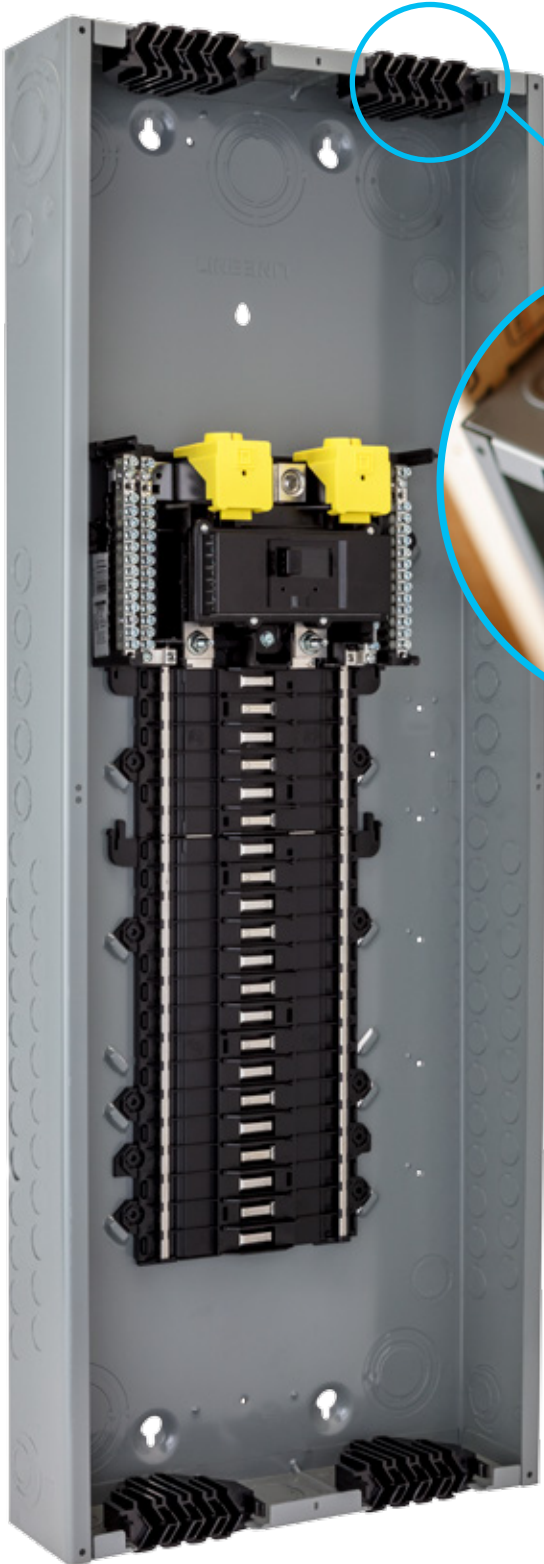
Life Is On

SQUARE DTM
by Schneider Electric

Authorized Partner **CCED**
CENTRAL COAST

QO and Homeline

Load Centers with Qwik-Grip:



Square D Plug-on Neutral Load Centers with Qwik-Grip wire management system speeds up wire installation simplifying your rough-in.

Electrical contractors will appreciate not having to remove knockouts, install wire connectors and blindly pull wire into the load center versus the ability to slide wires from the front with the Qwik-Grip wire management system. A quick bend of the wire using the wire bend guide on the Qwik-Grip insert and the wire easily slides into the slot. Once done, snap on the Qwik-Grip shield to keep the wires behind the router for a secure, code compliant installation. Qwik-Grip, a state of the art wire management system, allowing you to move on the next job quicker.

Qwik-Grip Wire Management System

- Eliminates most knockout removal
- Eliminates most box connectors
- Speeds up and simplifies rough-ins
- Great for service up-grades, remodels or just adding a circuit
- UL Listed, code compliant

Eliminate the need for half-inch and most three-quarter inch knockouts and box connectors with Qwik-Grip.

Qwik-Grip inserts are factory installed and ready to wire. Simply snap off a Qwiklet tab, and slide in the wire. If too many tabs are removed, an ample supply of fillers are included. Wires slide into the Qwik-Grip module with each slot holding 3 to 5 NM-B wires, then wires are locked into place using the Qwik-Grip shield. This is the easiest and fastest way to install a Load Center in the marketplace today.

Installation is fast and easy with Qwik-Grip Wire Management System



STEP

1

Remove the needed Qwiklet tabs



STEP

2

Slide the wire into the slot



STEP

3

Snap on the Qwik-Grip shield when all circuits are installed

Save More Time...

when combining QO or Homeline Plug-on Neutral Load Centers with Qwik-Grip, Arc Fault and Dual Function breakers

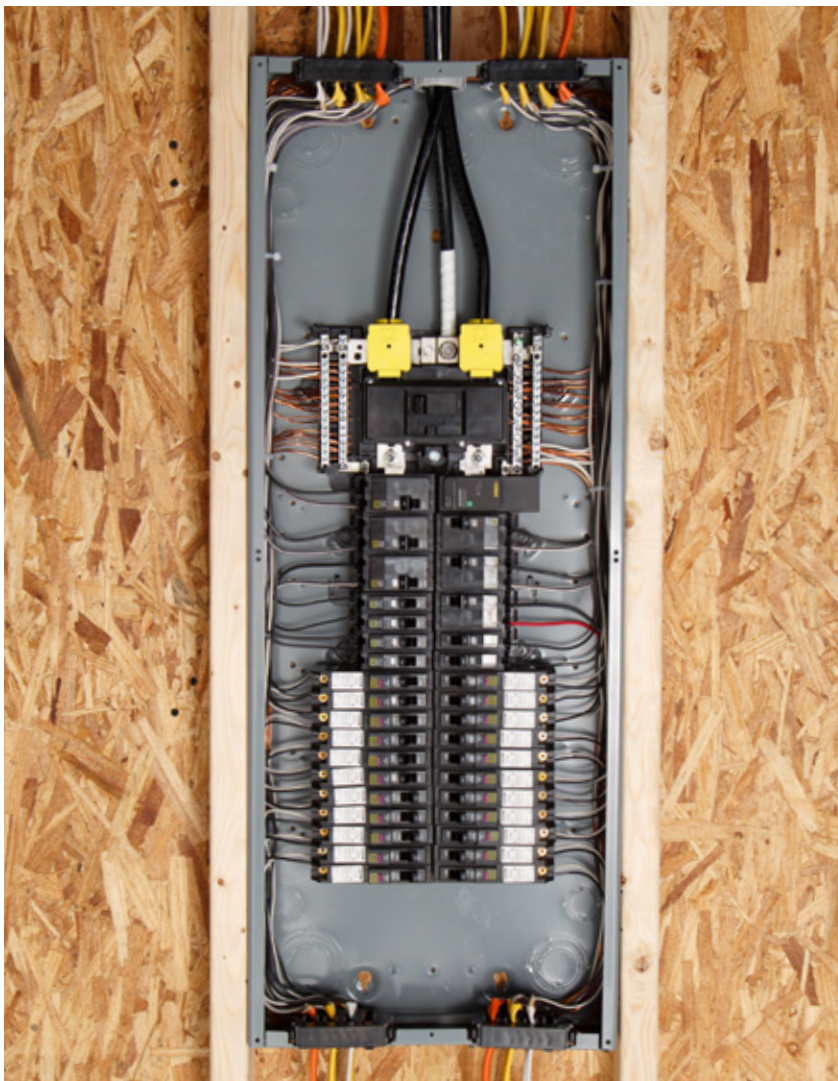
Qwik-grip load centers with Plug-on Neutral Arc Fault and Dual Function breakers simplifies your installation, increases productivity and eliminates parts on the job. After all, you have better things to do with your time.

Simplify and speed up your installations with Qwik-Grip Plug-on Neutral Load Centers

Square D Plug-on Neutral Load Centers with Qwik-Grip, eliminate the need for almost all knock-outs, making rough-ins a whole lot easier and faster. All the while reducing your risk of mistakes, callbacks and having to install connectors, since wires slide right into the Qwik-Grip insert in just seconds. Plus, the Qwik-Grip wire management system makes adding a circuit simple. Remove the shield and the needed Qwiklet tabs, slide the new wire right into the slot and then snap the shield in place.

Reduce wiring with Plug-on Neutral breakers from Square D

We've eliminated pig tail wires with Plug-on Neutral breakers, moving your installation time along, while reducing the overall number of wires you're dealing with. Fewer connections and fewer wires, helps clean up gutters speeding up your job. This Helps reduce mistakes or missed pigtail connections that can create call backs.



Pigtails



Plug-on Neutral



Simplify installation with Plug-on Neutral Arc Fault and Dual Function Breakers

Bring the reliability and protection of CAFI and GFCI into the Load Center, where it belongs!

Combination Arc Fault Circuit Interrupters (CAFI)



Arc Fault Breakers help provide protection against dangerous arcing; the precursor to many electrical fires. Square D QO™ and Homeline™ CAFIs help protect people and property from fires caused by electrical arcing. These devices continuously monitor the branch circuit and trip when a potentially dangerous condition is detected.

Dual Function (CAFI + GFCI)



Two critical, state-of-the-art technologies in one device. The innovative Square D QO and Homeline Dual Function Circuit Breakers combine Combination Arc Fault and Ground Fault (Class A) Protection in one circuit breaker. Dual Function Circuit Interrupters provide the most advanced level of protection.

Added Value with TIME SAVER Diagnostics

TIME SAVER Diagnostics is the simplest way to troubleshoot an electrical fault. In just seconds, you will have an answer as to why a breaker is tripping.

TIME SAVER Diagnostics

Eliminate the guesswork with TIME SAVER Diagnostics to identify the type of fault that last occurred.

The TIME SAVER Diagnostics sequence is simple and easy to use and requires no tools or special training.



STEP 1

Simply turn off the circuit breaker



STEP 2

Hold down the Push-To-Test button.



STEP 3

Turn the circuit breaker back on.

If the circuit breaker trips immediately, it is detecting a Ground Fault.

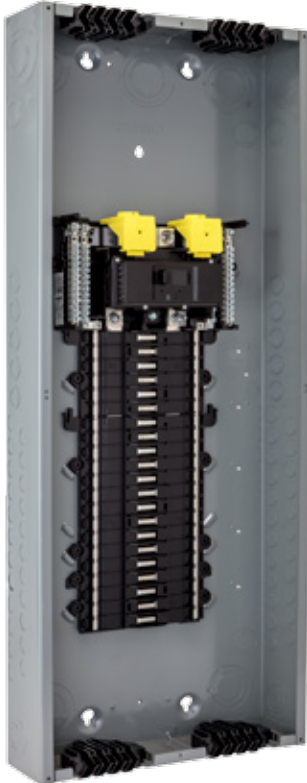
If the circuit breaker trips after a 2 second delay, it is detecting an Arc Fault.

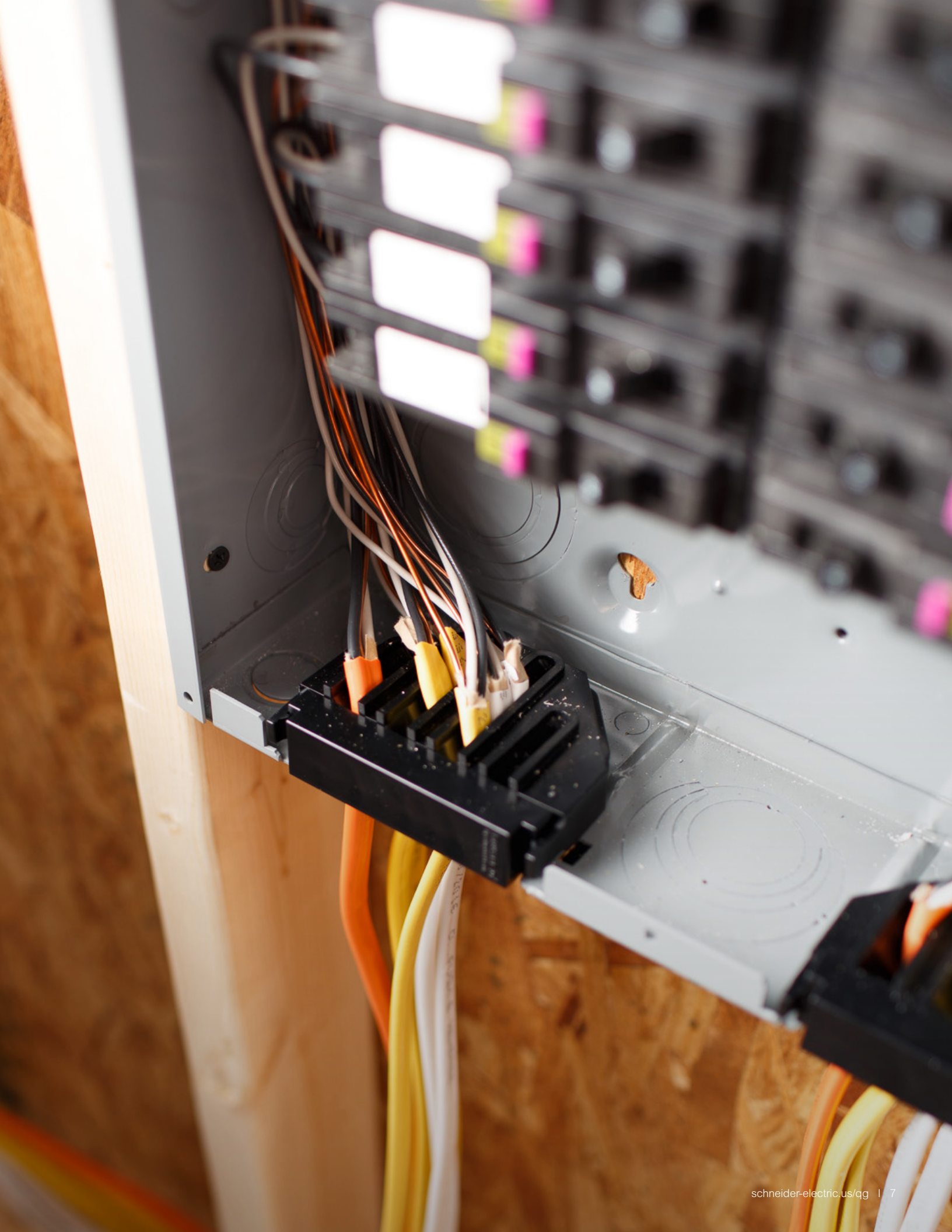
If the circuit breaker trips after a 5 second delay, it is a thermal overload or short circuit.

In any of these instances, it is an indication that there is an issue ON the circuit and NOT with the circuit breaker itself. (If there is no issue on the circuit to be diagnosed, tripping after a five second delay would also be a normal breaker testing operation.)

What's the Difference

between QO and Homeline

QO Load center		Homeline Load center
 <p>QO ¾" breakers feature Visi-Trip trip to center position</p>	<p>UL Listed Only for Square D Breakers</p>	<p>Homeline 1" breakers trip to center position</p>
<p>PON breakers installed on any space in select LCs</p>	<p>Accepts Plug-on Neutral CAFIs</p>	<p>PON breakers installed on any space</p>
<p>Top and split neutral plus (3) #1 AWG terminals</p>	<p>Backed-out Neutral Terminal Screws</p>	<p>Fully distributed split neutral</p>
<p>Tin-plated copper</p>	<p>Bus Bars</p>	<p>Tin & copper plated aluminum</p>
<p>Shielded</p>	<p>Bus Bars</p>	<p>Not shielded</p>
<p>¾ inch per 1 Pole space 40 spaces/circuit = 33¾ in. tall</p>	<p>Breaker Format</p>	<p>1 inch per 1 Pole space 40 spaces/circuit = 39½ in. tall</p>
<p>Combo cover shipped with load center. Optional surface or flush mount covers available</p>	<p>Cover Options</p>	<p>Combo cover shipped with load center. Optional surface or flush mount covers available</p>
<p>Lifetime Limited</p>	<p>Warranty</p>	<p>10 year</p>



Simplify Retrofits and Service Upgrades with Qwik-Grip

For remodels or service changes, the Qwik-Grip insert is easily removed leaving a convenient opening to pull in the existing feeders. Simply put the insert back in and slide those branch feeders into the Qwik-Grip insert. This is an incredible time saver!



Surge suppression to every installation!

The Square D QO and Homeline Plug-on Neutral Surge Protective Devices are compact and affordable surge suppressors designed for installation into QO and Homeline Plug-on Neutral load centers and CSED's.

These devices reduce surges that might otherwise overwhelm plug strips and damage connected household equipment. They also provide surge suppression for important items that are not compatible with plug strips such as washers, dryers, refrigerators, stoves, and lighting. Install peace of mind, while saving time and money on installation with the industry's easiest to install whole home Surge Protective Device.




Monterey & Salinas
<https://cedcentralcoast.com>
(831) 899-7544
customerservice@cedmonterey.com

Authorized Partner



Schneider Electric

800 Federal Street
Andover, MA 01810
888 SQUARED (888-778-2733)
www.schneider-electric.us/qg

 Support – 888-SQUARED

Life Is On

